

THE BEST SOLUTION FOR YOUR C-ARM

- ▷ Thales's Pixium Surgical Imaging Suite is an innovative combination of flat panel detectors and Imaging Chain Solution (ICS) for Surgical C-Arms.
- ▷ The new generation CsI based detectors, Pixium Surgical 2121S-A & Pixium Surgical 3030S-A operate in different modes to support all surgical applications, whether orthopaedic, cardiovascular, vascular, neurological or paediatric operations.
- ▷ Systems fitted with a Pixium Surgical detector combined with the Imaging Chain Solution (ICS) deliver high quality and distortion-free images in real time.

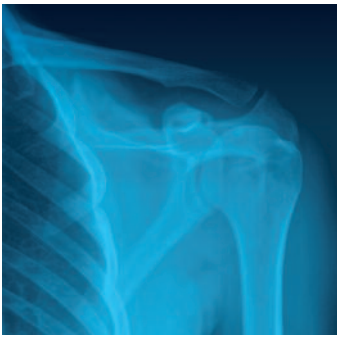


FLUOROSCOPY

Pixium Surgical Imaging Suite

A true alternative to conventional image chain for your C-Arm

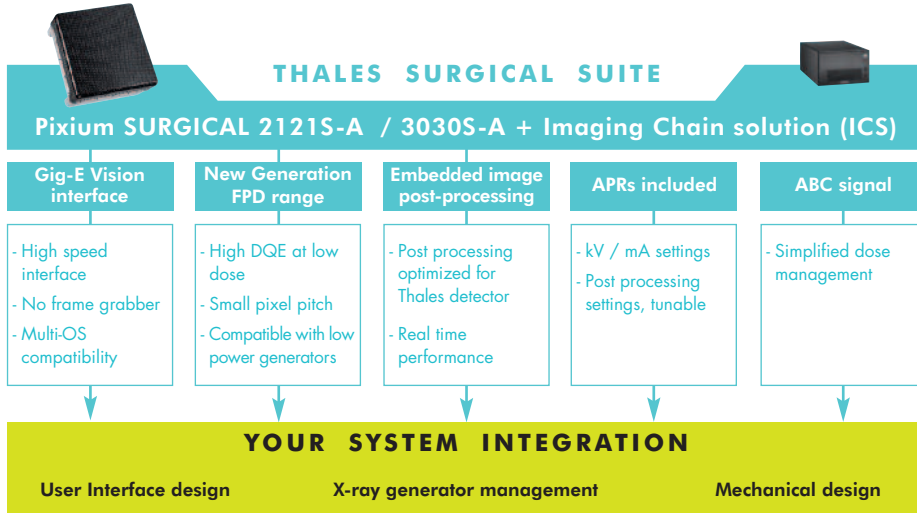




FLUOROSCOPY

Pixium Surgical Imaging Suite

Multi-application, with dedicated operating modes



THALES IMAGE CHAIN SOLUTION

Thales ICS features cutting-edge software algorithms to deliver in real-time a post-processed image to the system.

This guarantees both outstanding performance and high-quality images for a simplified integration.

Thanks to the ICS, high-quality images at low dose can be acquired faster and easier.



Flat Panel characteristics	Pixium Surgical 2121S-A	Pixium Surgical 3030S-A (WIP)	Unit
Scintillator	Pixium® Csl		
Pixel pitch	154		µm
X-ray sensitive area	207 x 207	301 x 301	mm (V x H)
	1344 x 1344	1956 x 1956	pixels
AD conversion	16		bits
X-ray generator voltage range	40 - 150		kV
Maximum frame rate (full image, 1x1)	25	13	fps
Maximum frame rate (full image, 2x2)	30		fps
DQE@ 0 lp/mm, RQA 5, 20 n Gy	76	75	%
DQE@ 2 lp/mm, RQA 5, 20 n Gy	33	30	%
Detector dimensions	283 x 288 x 78.5	380 x 380 x 78.5	mm
Detector weight	8.7	12.9	kg
Detector max power consumption	14	15	W
Cooling	Passive cooling		
Imaging Chain Solution characteristics			
Image processing features	Image rotation and flipping - Windowing - Grey Scale inversion - Pan-crop - Overlay Save and replay: real time saving (up to 145 000 images) DSA and Road mapping (option)		
Image processing algorithms	Dynamic Range compression (DRC) - Edge Enhancement - Smoothing - Noise reduction		
APR	Dose, filtration and post-processing settings (tunable)		
Interface to host system	GigE interface (commands, images & ABC signal)		

Contact us: +33 (0)1 30 70 35 58 - xrayimaging.marketing@thalesgroup.com

THALES - MICROWAVE & IMAGING SUB-SYSTEMS

Tel: + 33 (0)1 30 70 35 00 - Fax: + 33 (0)1 30 70 35 35

Thales Electron Devices SAS - 2, rue Marcel Dassault - 78140 Vélizy-Villacoublay - France

Capital de 30 998 925 euros - RCS Versailles 340 723 626